



Client
Software
For Users of
the
Newton™
MessagePad™
and
FirstClass®
Mail and
Conferencing
Systems

Black Labs, Inc.
6205-B Lookout Road
Boulder, CO 80301

(303) 530-0511
(303) 530-5409 fax

FirstClass Retriever™

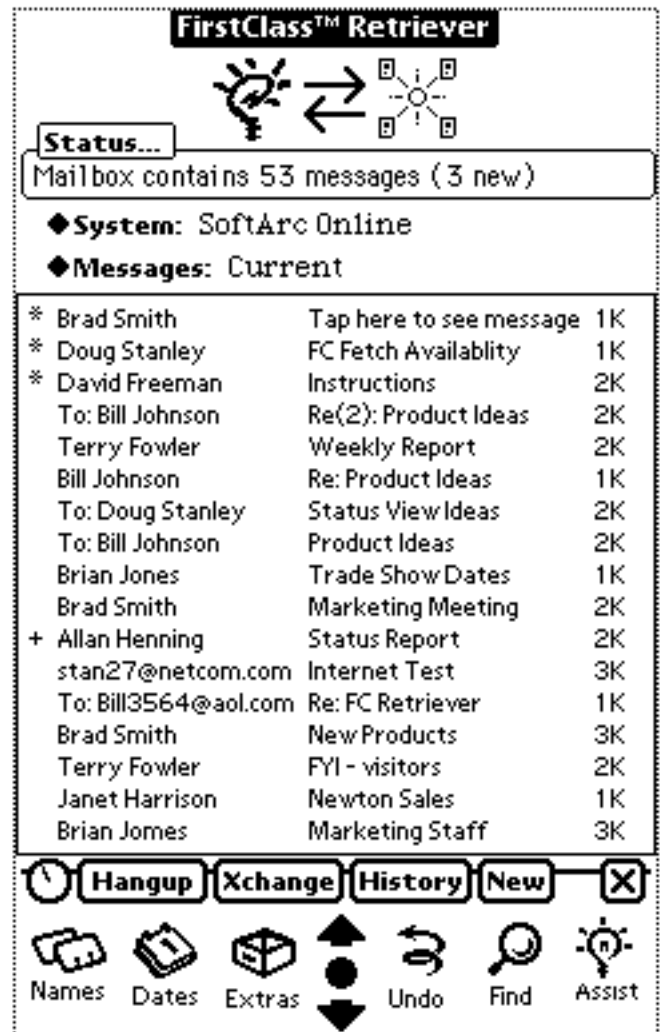
Traveling no longer means being out of touch.

Business travel used to be *much* more of an adventure: Remember using "preliminary" information in a client meeting because the final version was a thousand miles away in your office inbox? Negotiating with a VIP prospect based on last week's inventory report? Or wondering if your boss read that important message you sent last night...?

That was before FirstClass Retriever made it *easy* to stay in touch — Exchange the latest information with your colleagues. Send and receive vital updates. Stay as informed as you would in the office. You'll have complete access to all your FirstClass messaging systems, thanks to your Newton MessagePad, a modem, and FirstClass Retriever software.

FirstClass Retriever lets you automatically retrieve, read, and reply to mail from remote FirstClass servers, with just a few taps on the screen of your Newton MessagePad. You can compose messages off-line, when there's time in your busy schedule, and have them sent automatically the next time you connect to a FirstClass server. You can also retrieve your incoming messages, read them off-line, and save them permanently to your MessagePad... you'll always have the latest updates, facts, and figures when you need them!

FirstClass Retriever also makes your travel time more productive: When you're on the run, its "Xchange" mode lets you conduct a totally automated messaging session, so you can pay attention to business.



With FirstClass Retriever, you're always in touch with your office. Just tap on your MessagePad screen and receive mail from your colleagues, revised facts and figures, and those critical updates that make all the difference when you're traveling.

For example, FirstClass Retriever can be set to dial a FirstClass server every hour, send all mail you've composed off-line, retrieve all new messages, and sound an alert tone when your boss sends you that critical update you need...

The "Connect" mode lets you check your mail manually and decide exactly what you want to do with every individual message in your electronic mail-

box... it's complete message control for your less hectic moments.

Best of all, FirstClass Retriever is affordable — it's less than \$80. Now, isn't that a small price to pay for a little *less* adventure in your business travel?





Features and Benefits

Compose or edit messages off-line *at your convenience and send them the next time you connect.*

Automate your mail sessions with the Xchange button *and let FirstClass Retriever send & retrieve mail, while you continue to work.*

Route mail using FirstClass' forwarding and gateway technology. *No need to remember the path to your target FirstClass system - FirstClass Retriever will make sure the mail gets delivered!*

Display message histories *and know exactly when your colleagues opened your message.*

Black Labs, Inc.

(303) 530-0511
fax (303) 530-5409

Blacklabs@aol.com
Blacklabs@online.apple.com
73641,3351@compuserve.com

Animated icons show the status of the remote connection and the transfer of data.

The Status Box shows the task being performed, or most recently performed.

Tap here to select, create, store, and edit system names, phone numbers, user IDs, or passwords.

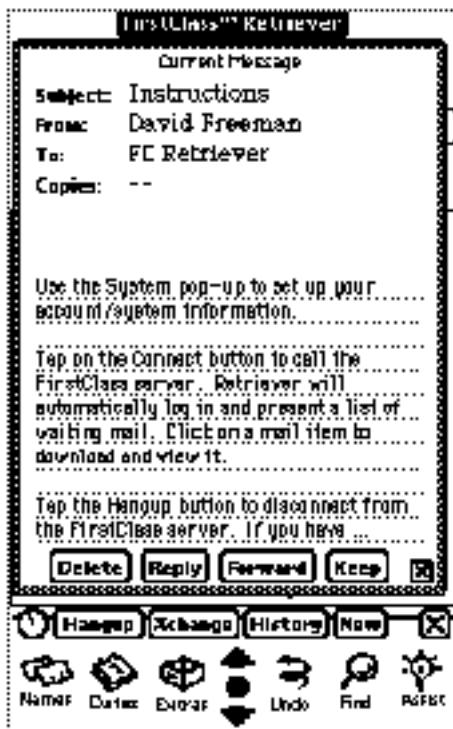
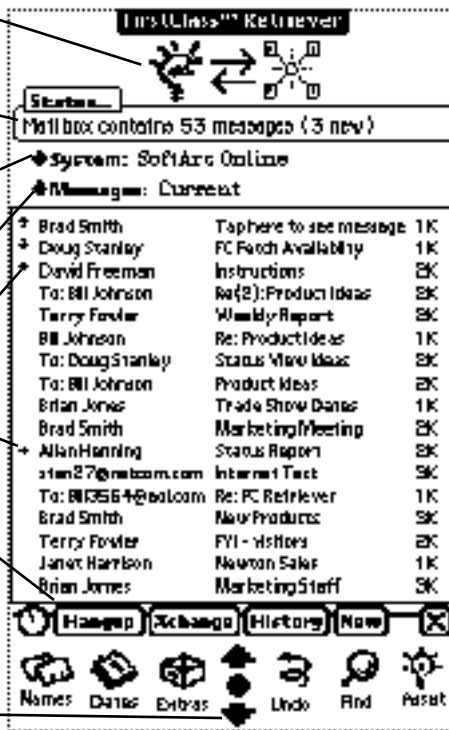
Tap here to switch between the Current, Saved, or Unsent message lists.

Asterisks indicate unopened messages.

The plus indicates this message has an attachment.

The Hangup/Connect button disconnects from the remote system, or connects to the system when there is no connection. The Xchange button starts an automated message session. The History button tells you when a message was read by the recipient. The New button creates a new message.

The arrows let you scroll through long messages or lists.



FirstClass Retriever not only opens a message when you tap on a message list item, it also organizes your mail into three different lists: The Current list displays all messages retrieved from a FirstClass host system. These messages can be viewed off-line, but will be updated when you make your next connection to a FirstClass mail system.

The Saved list shows messages that have been permanently saved to your MessagePad. The Unsent list displays messages that are waiting to be transmitted to a FirstClass host system during a future connection session. Unsent messages are created by opening a New message, or by Forwarding or Replying to a message in the the Current or Saved message lists.

You can always Delete, Reply to, Forward, or Keep any message in any list. When you Connect to a FirstClass host, the Current

message list is updated and you have complete control over what messages you send or retrieve. When you Xchange mail with a FirstClass host, your outgoing mail will be sent and your incoming mail retrieved, according to the preferences you've defined...

Simple, logical, and powerful — that's the FirstClass Retriever way!