



**ATTENTION:  
Mentor Graphics  
users!**  
Connect to Saber's mixed-signal design  
environment and **SAVE 50%**  
or more through December 31, 1997!

- YES** I want more info on how Saber® can put the 'Real World' into my simulations!  
Please rush complete info to the address listed on the right.
- YES** I want to **SAVE 50%** on QVS™ or QVS Pro™.  
Please have an Analogy representative contact me before December 31, 1997 so I can lock-in these savings.

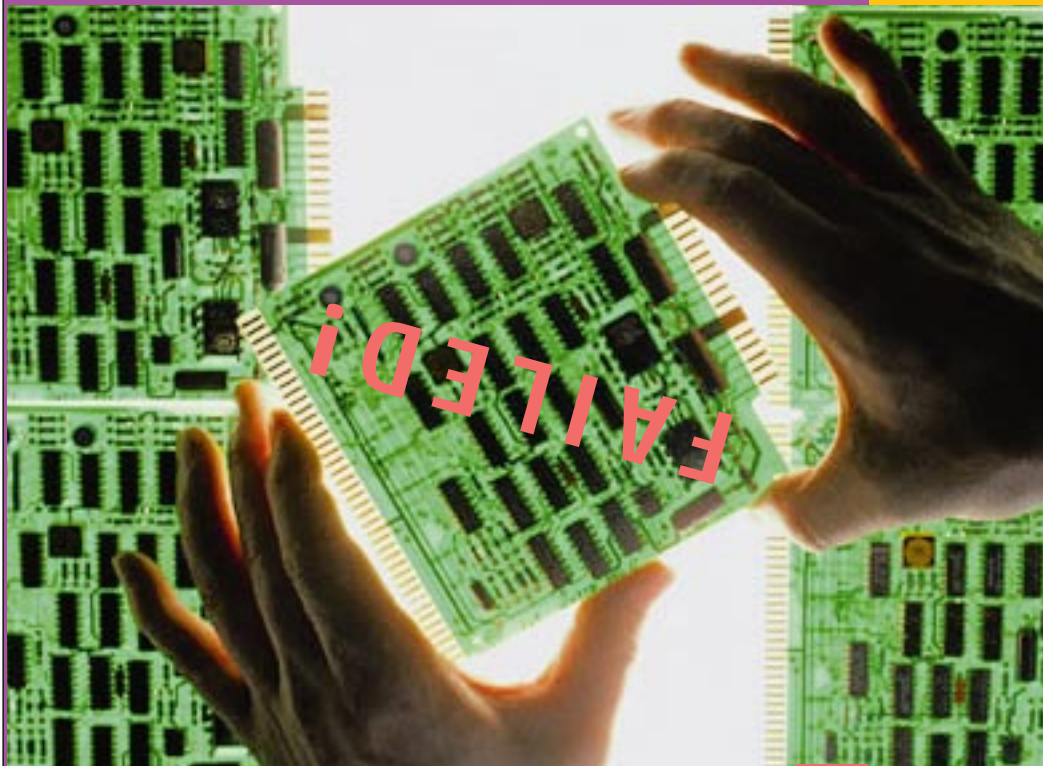
Please make any necessary corrections to the address label and provide the missing information:

Name: \_\_\_\_\_ Title: \_\_\_\_\_  
 Organization: \_\_\_\_\_  
 Mailing Address: \_\_\_\_\_  
 Phone: (\_\_\_\_) \_\_\_\_\_ - \_\_\_\_\_ Fax: (\_\_\_\_) \_\_\_\_\_ - \_\_\_\_\_ E-mail: \_\_\_\_\_

I am currently using the following simulation tools: \_\_\_\_\_  
 I am currently using the following method of design entry: \_\_\_\_\_



R.W. Smith  
 123 Main Street  
 Anywhere, USA 12345

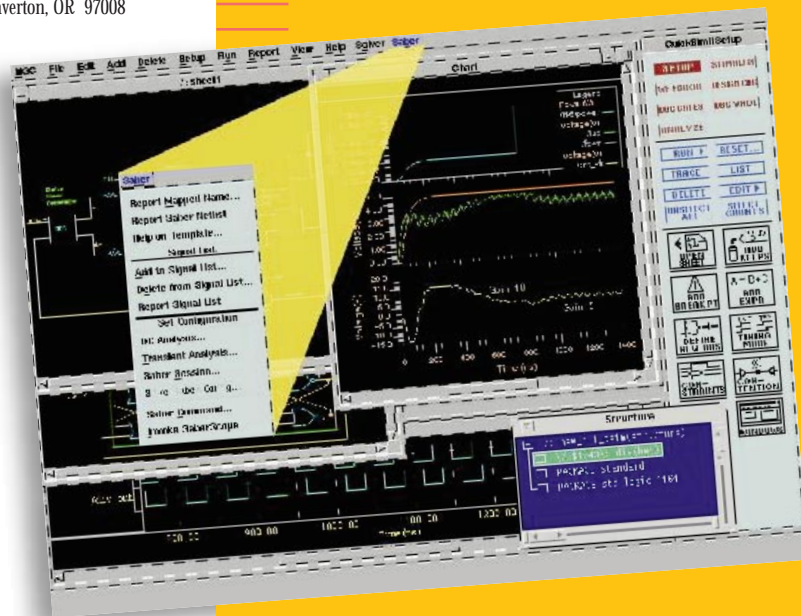


Frustrated by designs  
 that check out in the lab...  
 ... but misbehave in the  
 Real World?  
 Put some 'Real World'  
 in your mixed signal  
 simulations —  
 with Saber®  
 from Analogy®.



Analogy, Inc. • 9205 S.W. Gemini Drive • Beaverton, OR 97008

Go beyond the  
*theoretical...*



... and get what's  
*manufacturable.*  
**Saber®.**

Add Saber's mixed-signal capabilities  
 to your Mentor Graphics menubar.

If the Real World was 100% digital,  
you wouldn't need the power of Saber.

But it isn't. And you do.

Saber—The Real World Simulator.

**Model your entire product, top to bottom.**

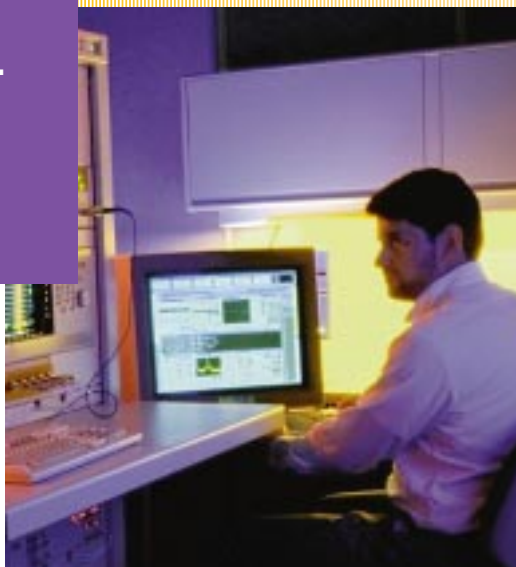
It's a common problem: circuit designs that look fine in the lab but act up on the manufacturing floor or in the customer's hands. And, unfortunately, the cause is all too common — design and test simulations that model only at the subsystem level but can't simulate the product as a whole.

When problems pop up, you've got to go through another round of prototyping and some very time-consuming screen builds... and you fall further behind schedule. If only your simulations could model your *entire* product and all of its complex interactions with the real world...

There's a simple but powerful solution — *Saber*. It's the only simulator that can model everything the real world has to offer: Analog. Digital. Mechanical. Hydraulic. Optical... if it can be described mathematically, Saber can simulate it. It's the choice of those who need to manufacture and sell in The Real World.

**Let Saber sweat the details.**

Let's face it — if your simulator doesn't sweat the details, you'll have to. And that means slower development, more 'surprises' on the manufacturing floor, and a longer time-to-market. So use a simulator that does it all — Analog's Saber.



**Test Drive in the Real World.**

Pop the hood and you'll find the powerful Saber simulator engine. This mixed-signal, mixed-technology simulator is the industry standard, with a track record stretching back more than a decade. And it's supported by the industry's largest library of component models — more than 10,000 characterized parts and 8,000 generic template Add our hardware description language, MAST<sup>®</sup>, and there's nothing you can't simulate.

We put all that power at your fingertips with a suite of elegant, highly interoperable, UNIX or Windows NT<sup>®</sup>-based design tools. With its superior ease-of-use, Saber will quickly become a valued new member of your engineering team.

**ATTENTION: QuickSim II<sup>™</sup> or QuickHDL Pro<sup>™</sup> Users:  
SAVE 50% (or more) on QVS or QVS Pro,  
The Saber/Mentor Graphics Interface!**

Another detail we sweat is integration with your current design environment — thanks to Analog's Frameway integration technology. With Frameway, Saber seamlessly integrates with QuickSim II or QuickHDL Pro, among others.

With QVS (for QuickSim II) or QVS Pro (for QuickHDL Pro), a Saber menu bar item will be added to your existing Mentor Graphics system, giving you immediate access to Saber's powerful mixed-signal, mixed-technology simulation engine. Now you can simulate your entire product, not just the digital portion!

**Now's the time to add the full power of  
Saber to your Mentor Graphics menubar!**

**Send in the enclosed reply card by  
December 31, 1997 and Save 50% on QVS  
or QVS Pro, The Saber interface for QuickSim II  
or QuickHDL Pro!**

For more information, visit our website at  
[www.analogy.com](http://www.analogy.com) and click on 'Special Promotions.'

**But hurry! — to qualify, you must  
contact us by December 31, 1997.**

**Does your current simulator sweat the details?  
Compare and see:**

Saber	Your Simulator?
<input checked="" type="checkbox"/>	<input type="checkbox"/> Handles analog and mixed-signal systems
<input checked="" type="checkbox"/>	<input type="checkbox"/> Simulates your entire product (not just subsystems), including its interactions with external systems
<input checked="" type="checkbox"/>	<input type="checkbox"/> Supported by the world's largest library of device models
<input checked="" type="checkbox"/>	<input type="checkbox"/> Seamless co-simulating from within your QuickSim II or QuickHDL Pro environment
<input checked="" type="checkbox"/>	<input type="checkbox"/> Handles mixed-technology (i.e., electrical, mechanical, hydraulic, magnetic, thermal, optical and others)

**If your current system doesn't stack up against Saber,  
better roll up your sleeves — it's time to start sweatin'!**



Analogy, Inc.  
9205 S.W. Gemini Drive  
Beaverton, OR 97008

**503-626-9700  
FAX 503-643-3361**

E-mail: [info@analogy.com](mailto:info@analogy.com)  
Website: [www.analogy.com](http://www.analogy.com)



NO POSTAGE  
NECESSARY  
IF MAILED  
IN THE  
UNITED STATES

**BUSINESS REPLY MAIL**

FIRST-CLASS MAIL PERMIT NO. 000 CITY, STATE

POSTAGE WILL BE PAID BY ADDRESSEE



Analogy, Inc.  
9205 S.W. Gemini Drive  
Beaverton, OR 97008

